



Hugh the Ducky's



HUG's Holey Hose Holder

"In-Floor Heating Made Simple"

Holey Hose Holder INSTALLATION STEPS

Installing the Holey Hose Holder (H4) should be the first step in running your pex pipes.

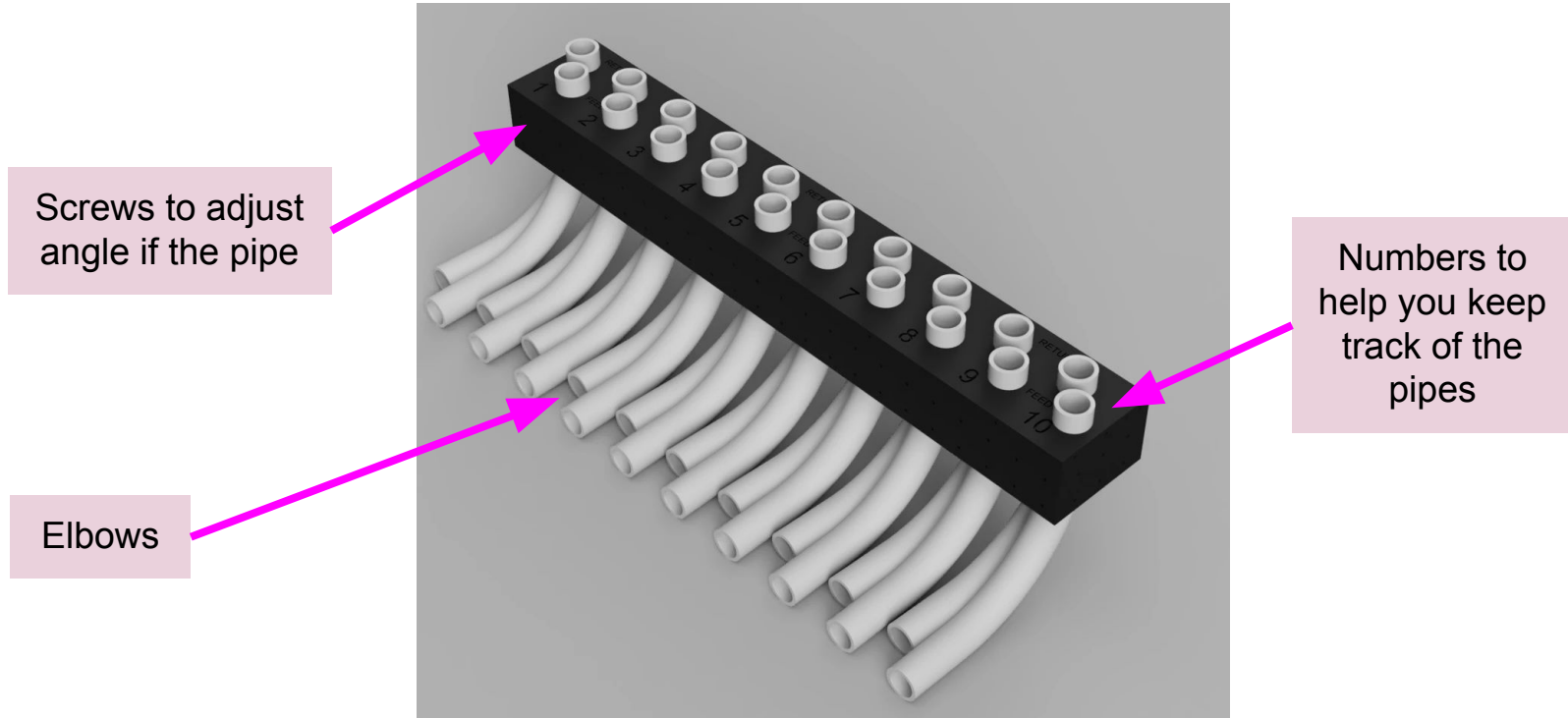
Install the H4 before you run pex pipes, because the H4 gives you the place to run the pex to and from.



Pex Piping being rolled out on the pink foam on a new build.



Your Holey Hose Holder



1) Drive the wood stakes into the foam into the ground.

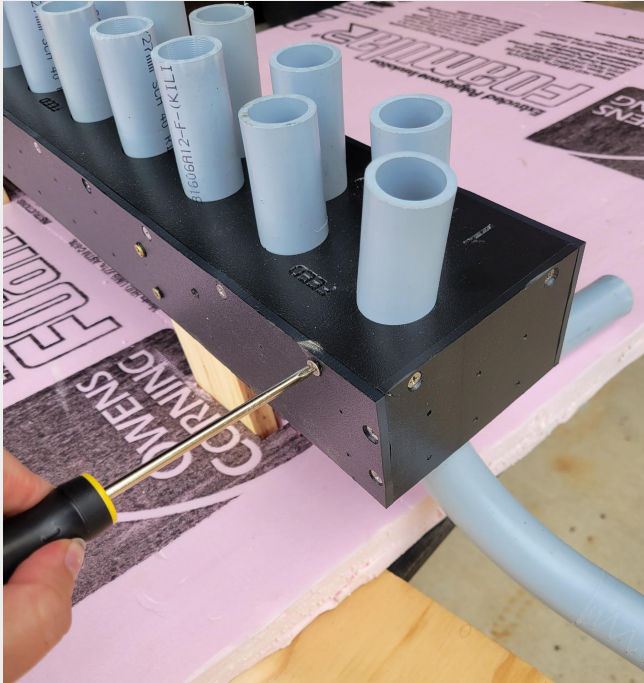
If going next to a wall, drive the stake immediately in front of where the wall is going to be (about 1/4" in front of the finished wall)

This will place the H4 against the finished wall and behind the HUG Hydronics Unit.



Drive the stakes where you want the H4 to be.

2) Adjust elbows if desired.



Use a screwdriver to loosen the screw closest to the elbow to change its rotation.

2) The H4 elbows come in the standard front position, all elbows facing out and as high as the elbows can go. Each elbow has a screw that locks it into place.

To change the orientation of an elbow, loosen the screw on the front or back wall nearest the elbow you wish to change and then move the elbow into the desired position and then retighten the screw.



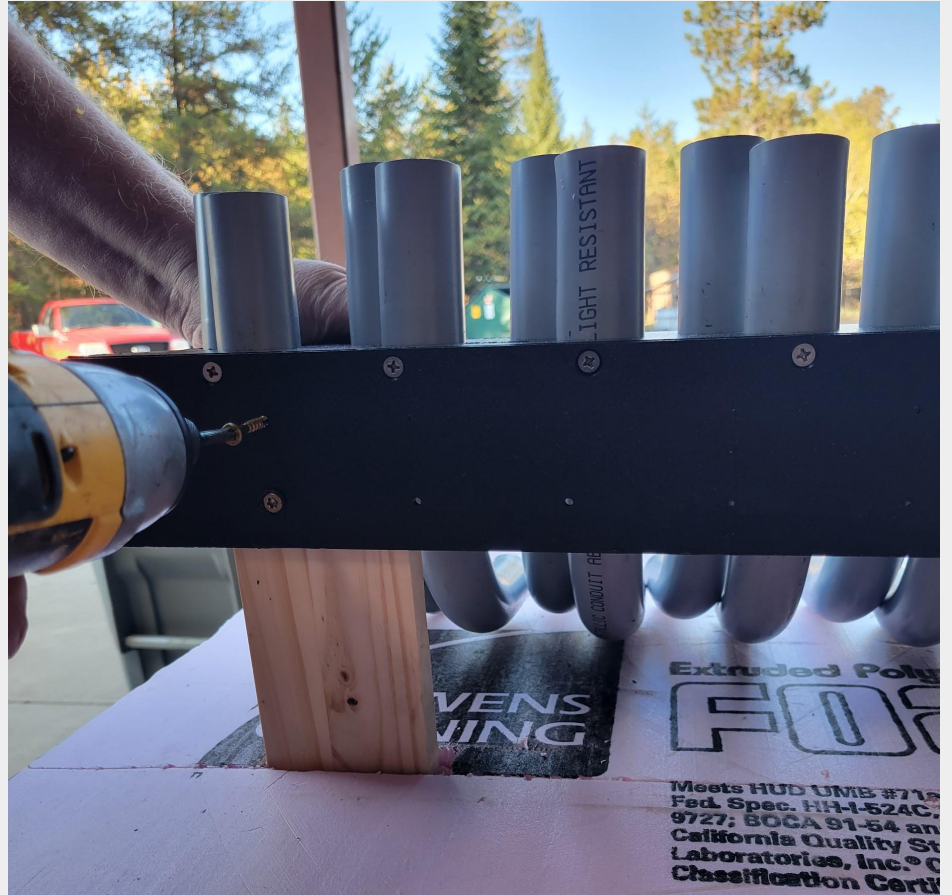
Use your hand to move the elbow as desired and then tighten the screw.

3) Slide the H4 over the stakes,

so the stakes are at the back of the H4.

Secure the H4 with short screws through the predrilled holes in the H4 wall.

The H4 has been slides on to its stakes and is being screwed in place.



4) When attached, the bottom of the H4 should be about 3.5" above the styrofoam,



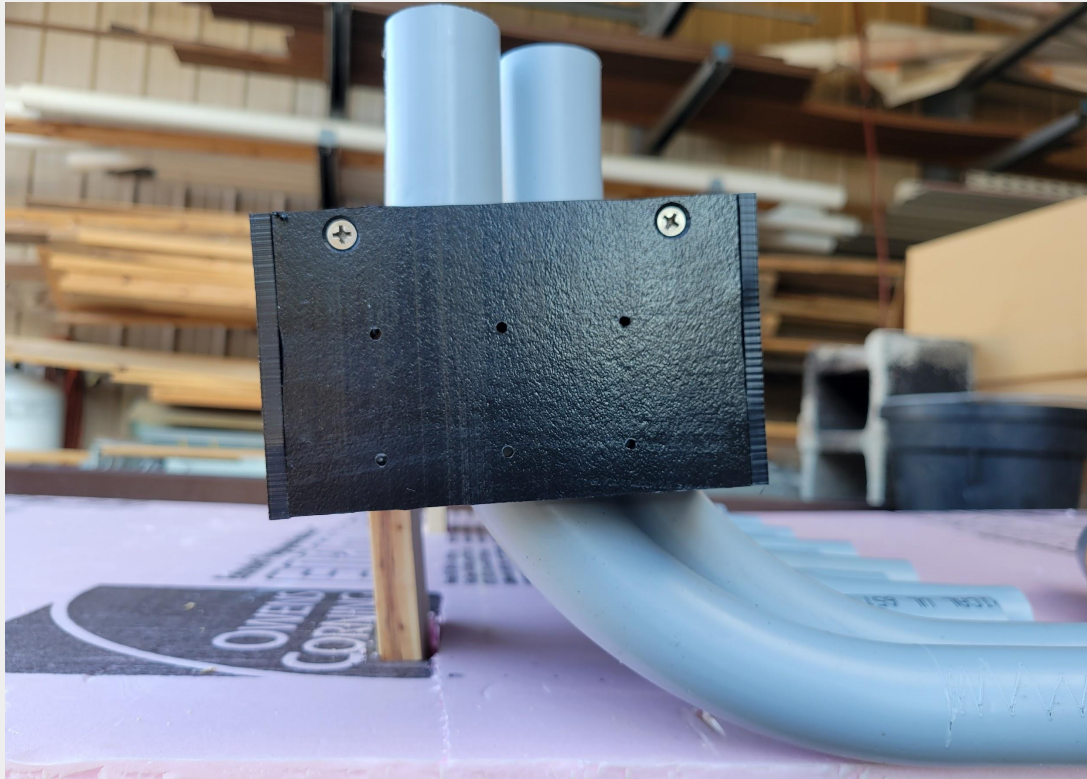
which will result in $\frac{1}{4}$ of the way into the concrete after an average 4" pour.

If you want the H4 to sit deeper into the concrete, you can use a knife to carve away some of the insulation under the elbows until you are satisfied with the way it is sitting (or will sit after the concrete is poured).

Or you could cut a square out of the styrofoam out under where the H4 will go and dig down under it to as deep as you wish, and then put the styrofoam back in before installing the H4.

When installed, the bottom of the H4 should sit between 3" and 3 1/2" above the styrofoam.

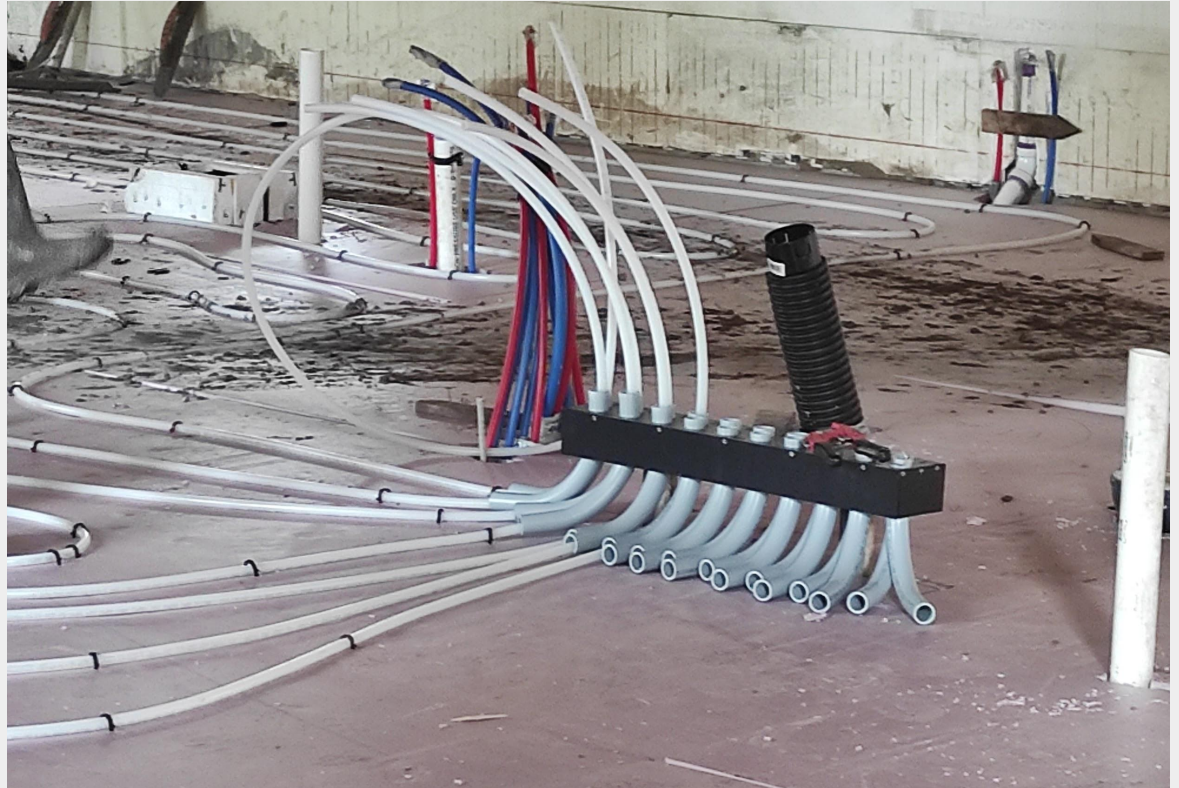
If the H4 is not level, that is ok.



5) Run your pex pipes,

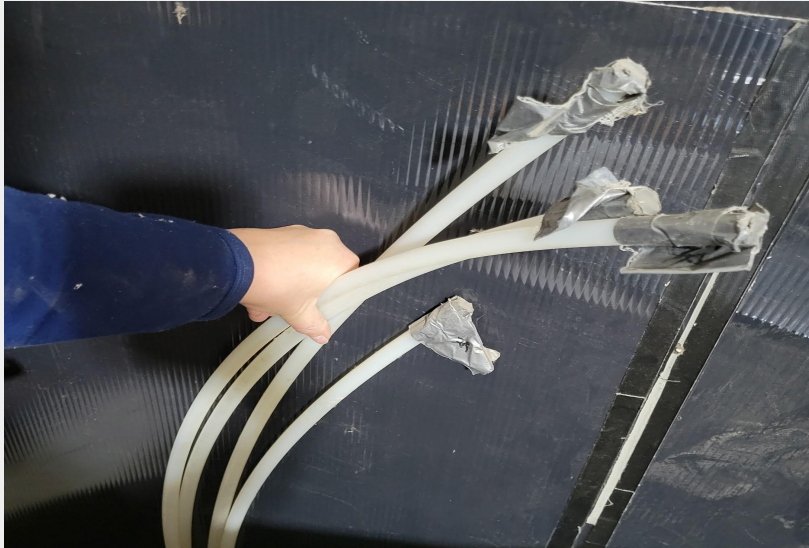
according to the plan you have made, beginning and ending each 300' run by running it through the matching elbow on the H4.

Pex pipes being organized with the H4.



6) When all the Pex pipes are laid you may want to tape the tops of the pipes to prevent debris from falling into them.

You are now ready to lay cement.



Put tape on the hose ends to prevent debris from entering them while you are building and before they are hooked up to the HUG Hydronics unit.

Congratulations!
You're Just Ducky

Hugh the Ducky Tech Line

Feel free to call or email our **Hugh the Ducky Tech Line** for personal assistance.

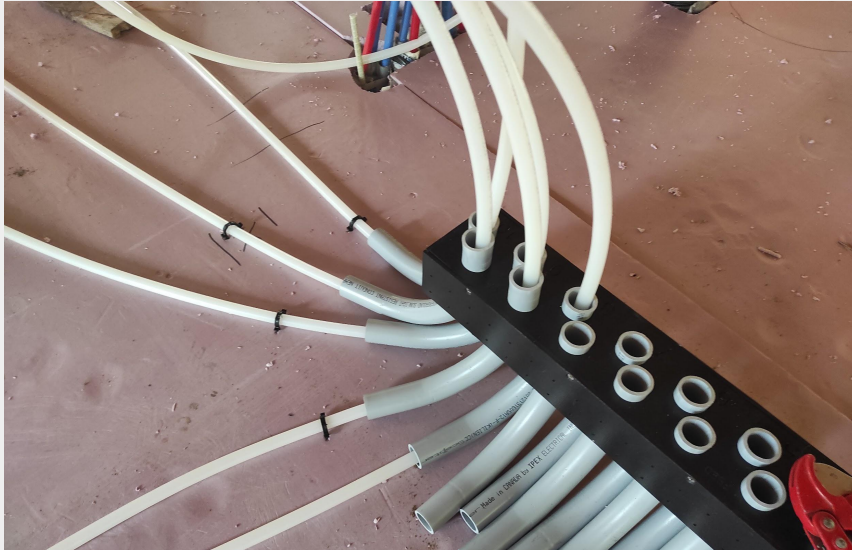
HUGH@hughydronics.com- include pics of your set up/question please.

218-587-5001



For quicker laying of pex pipes, you may want staple it to your foam board. Pex Stapler rental is available (and staples too).

<https://hughydronics.com/products/foamboard-stapler-daily-rental-rate>



In this picture you can see the little black staples holding the pex tubes in place. They are typically used every 1-4 feet to keep pex in place while pouring cement.